

**Should you wish to continue the walk...**

Cross the iron gate and continue walking across the fields. You will soon come into view of the Carrigrohane castle, far away on the other side of the river. Another 30 minutes walk brings you back to the Lee road. From there, you can either walk back the way you came from or return towards Cork along the Lee Road. Another option is to continue walking west towards the Angler's Rest Pub where you can catch the bus. Note that it is not a very frequent bus.



Carrigrohane is likely to have been founded in the thirteenth century by the de Cogan, and came subsequently into many hands, including the Barretts, the MacCarthys and the Wallis. Of this latter family, Clotilda's spirit apparently remained in Carrigrohane where she is reputed to have haunted the upper regions, tapping her way around with a gold topped cane.



[www.CorkGreenmap.org](http://www.CorkGreenmap.org)

email: [walks@corkgreenmap.org](mailto:walks@corkgreenmap.org)

Copyright © Cork Greenmap Trust 2005. All rights reserved.  
Copyright © Green Map System™, Inc. 2003  
(Green Map System Icons and Logo). All rights reserved.  
Aerial photograph supplied and used with permission  
of the Department of Engineering, University College Cork.

## Meandering River Walk (along the Lee)



### The Walk

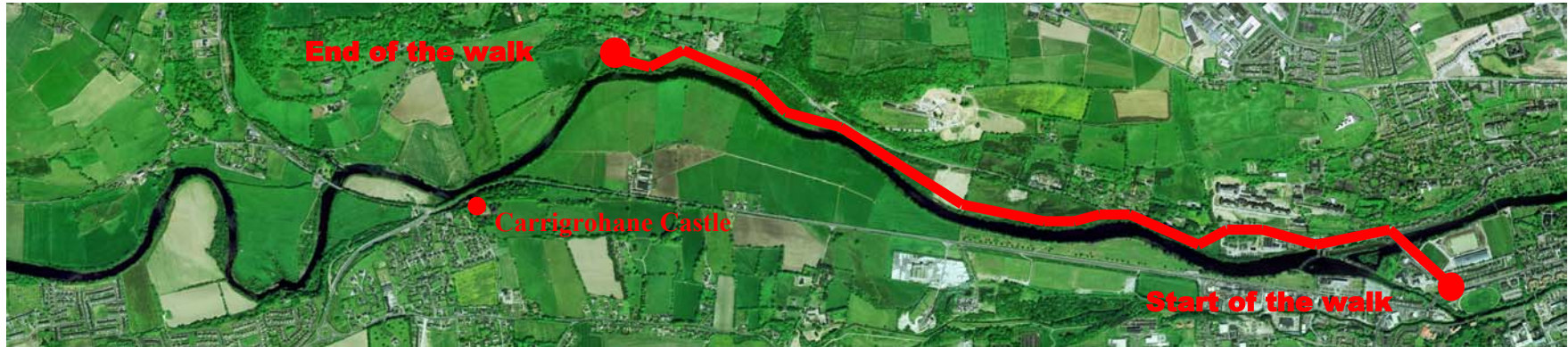
*Time: 3 hours (there and back)*

*Warning: Be cautious as the beginning of this walk is along a frequently-used road with occasional fast drivers.*

From the AIB bank, turn right onto Western Road towards Thomas David Bridge and the River Lee (you will pass UCC & Mardyke sports grounds on your right). Once above the River Lee, take a look at the Daly Bridge to your right in the distance.

Daly's Bridge, aka colloquially as the "Shakey Bridge", is Cork's only suspension bridge. It owes its existence to the generosity of a Cork butter merchant James Daly, who paid half the cost of the bridge. During the last century, ferry boats crossed the Lee at this spot.

Once you have crossed the bridge, turn left at the junction onto the Lee road.



Soon on your right, you will see the site of the old Cork Waterworks.

First established in the second half of the eighteenth-century, the Waterworks used to supply the bulk of the city's water supply from the River Lee. It is now the best-preserved Victorian water pumping station in Ireland and host to the Lifetime Lab Sustainability and Heritage Centre, a major conservation, heritage, educational and tourism project.

Continuing on the Lee Road, you will see the entrance of a huge grey building, which used to be the District Lunatic Asylum.

The old gothic-style District Lunatic Asylum claims to be the longest building in Ireland. In his time, it was capable of containing some 500 inmates. Part of it has now been converted into apartments.

Keep walking along the Lee Road for a few minutes until you reach a yellow house on your right and a road sign indicating "Hollymount" on your left. At this point turn left and enter a wide field.

From now, finding your way is quite easy as you follow a well-marked trail along the River Lee.

The source of the River Lee is located in Gougane Barra. some 60 Km west of Cork city. Legend has it that St Finbar killed a hideous dragon overlooked by St Patrick in Gougane Barra and then erected a church at the location of present-day Cork city.

Approximately 45 minutes after you left the road and entered the fields (and about 5 minutes after you passed a wall), turn left and walk over stepping stones, back to the main channel of the river. Keep walking along the river until you reach an old rusty iron gate between two trees.

Our walk ends here, as it is a nice place to stop and have some picnic food while enjoying the River Lee.

The river you can see along the walk is a classic example of a lowland river, relatively untouched by human intervention. It has many meanderings and wetlands which are an invaluable habitat for a very diverse wild life, including herons, Irish smooth newts, common frogs, salmon, otters...

